

Filozofski fakultet, zbirni izvještaj, 1. semestar 2022-2023-engleski

No. of responses = 155



Overall indicators

Global Index



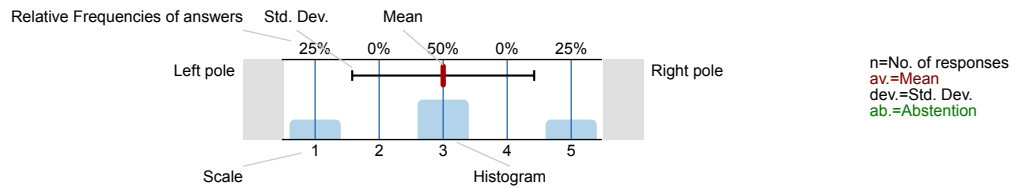
2. Questions on lectures and teaching quality



Survey Results

Legend

Question text

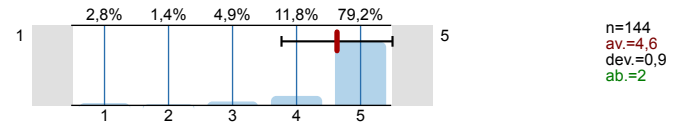


1. Questions about student

1.1) Sex:

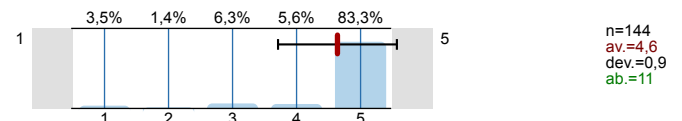


1.2) Make a self-assessment of capability of meeting the course requirements

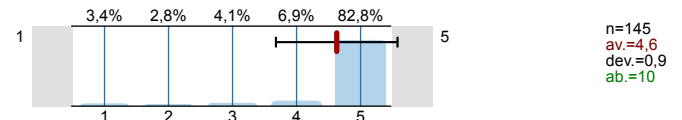


2. Questions on lectures and teaching quality

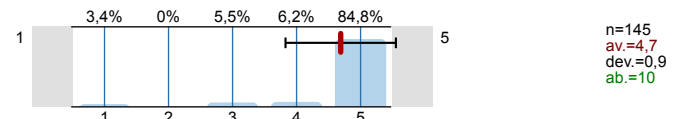
2.1) Teacher/associate has introduced the course contents and syllabus in a clear and understandable way.



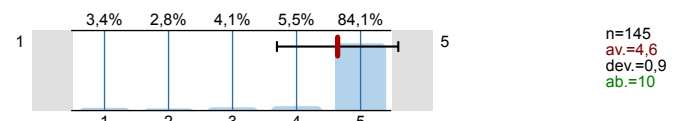
2.2) Teacher/associate has set clear methods and criteria for student assessment.



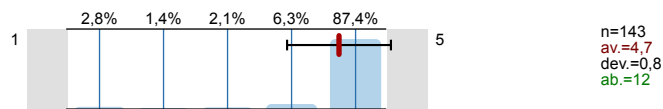
2.3) Lectures take place on time and regularly.



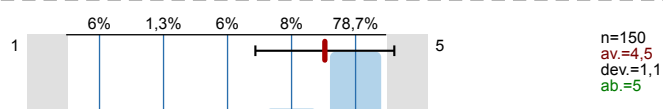
2.4) Teacher/associate presents the course contents in an understandable way.



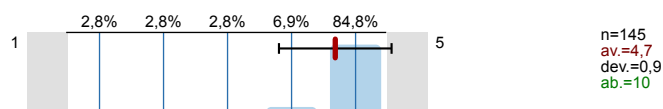
2.5) Teaching is preformed in accordance with the syllabus.



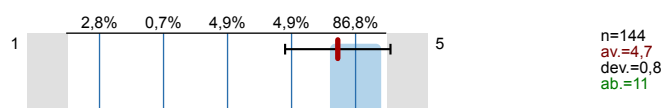
2.6) Teaching materials are user friendly and understandable.



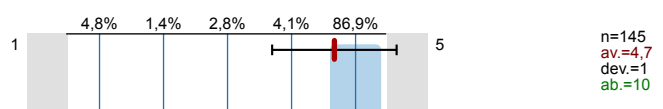
2.7) Teacher/associate puts effort into quality teaching.



2.8) Teacher/associate encourages student activity during lessons.



2.9) Teacher/associate has established fair communication with students.



Profile

█ **Compilation:** █ **Filozofski fakultet, zbirni izvještaj, 1. semestar 2022-2023-engleski**

Values used in the profile line: Mean

1. Questions about student

1.2) Make a self-assessment of capability of meeting the course requirements		n=144 av.=4,6 md=5,0 dev.=0,9
--	--	-------------------------------

2. Questions on lectures and teaching quality

2.1) Teacher/associate has introduced the course contents and syllabus in a clear and understandable way.		n=144 av.=4,6 md=5,0 dev.=0,9
2.2) Teacher/associate has set clear methods and criteria for student assessment.		n=145 av.=4,6 md=5,0 dev.=0,9
2.3) Lectures take place on time and regularly.		n=145 av.=4,7 md=5,0 dev.=0,9
2.4) Teacher/associate presents the course contents in an understandable way.		n=145 av.=4,6 md=5,0 dev.=0,9
2.5) Teaching is preformed in accordance with the syllabus.		n=143 av.=4,7 md=5,0 dev.=0,8
2.6) Teaching materials are user friendly and understandable.		n=150 av.=4,5 md=5,0 dev.=1,1
2.7) Teacher/associate puts effort into quality teaching.		n=145 av.=4,7 md=5,0 dev.=0,9
2.8) Teacher/associate encourages student activity during lessons.		n=144 av.=4,7 md=5,0 dev.=0,8
2.9) Teacher/associate has established fair communication with students.		n=145 av.=4,7 md=5,0 dev.=1,0