

# Filozofski fakultet, zbirni izvještaj, 2. semestar 2021-2022-engleski

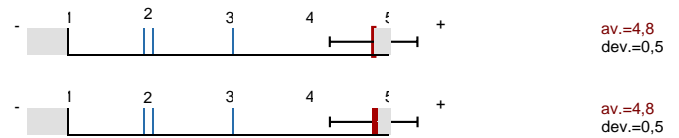
No. of responses = 54



## Overall indicators

### Global Index

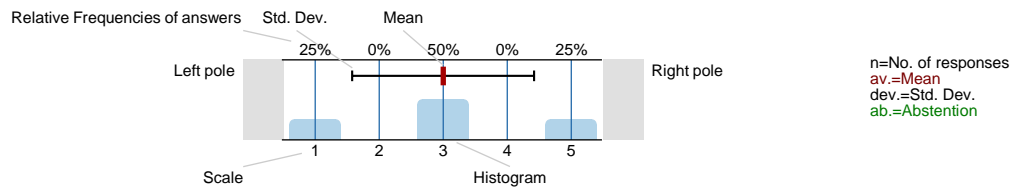
2. Questions on lectures and teaching quality



## Survey Results

### Legend

Question text

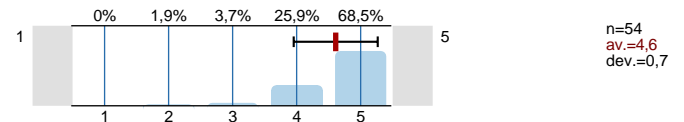


### 1. Questions about student

1.1) Sex:

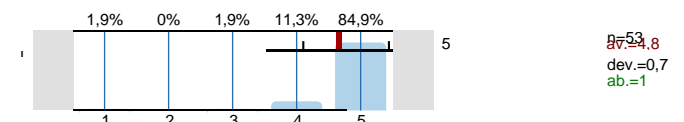


1.2) Make a self-assessment of capability of meeting the course requirements

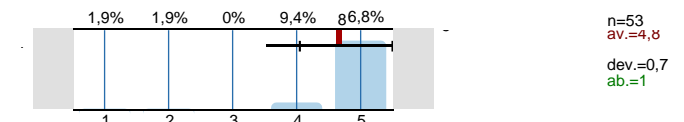


### 2. Questions on lectures and teaching quality

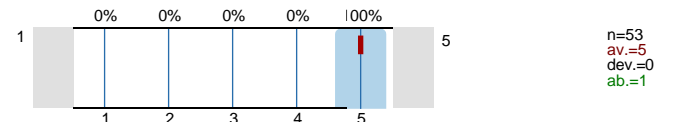
2.1) Teacher/associate has introduced the course contents and syllabus in a clear and understandable way.



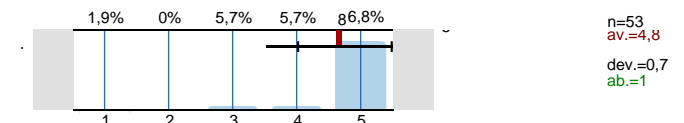
2.2) Teacher/associate has set clear methods and criteria for student assessment.



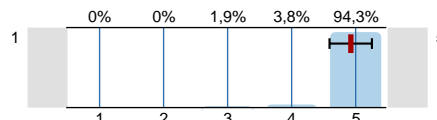
2.3) Lectures take place on time and regularly.



2.4) Teacher/associate presents the course contents in an understandable way.

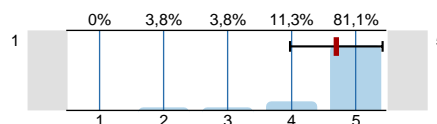


2.5) Teaching is preformed in accordance with the syllabus.



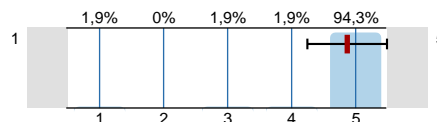
n=53  
av.=4,9  
dev.=0,3  
ab.=1

2.6) Teaching materials are user friendly and understandable.



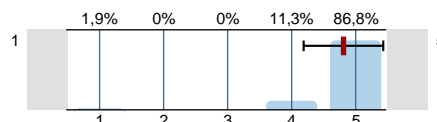
n=53  
av.=4,7  
dev.=0,7  
ab.=1

2.7) Teacher/associate puts effort into quality teaching.



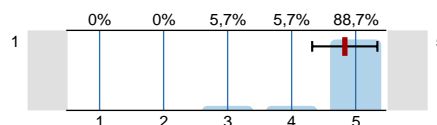
n=53  
av.=4,9  
dev.=0,6  
ab.=1

2.8) Teacher/associate encourages student activity during lessons.



n=53  
av.=4,8  
dev.=0,6  
ab.=1

2.9) Teacher/associate has established fair communication with students.



n=53  
av.=4,8  
dev.=0,5  
ab.=1

# Profile

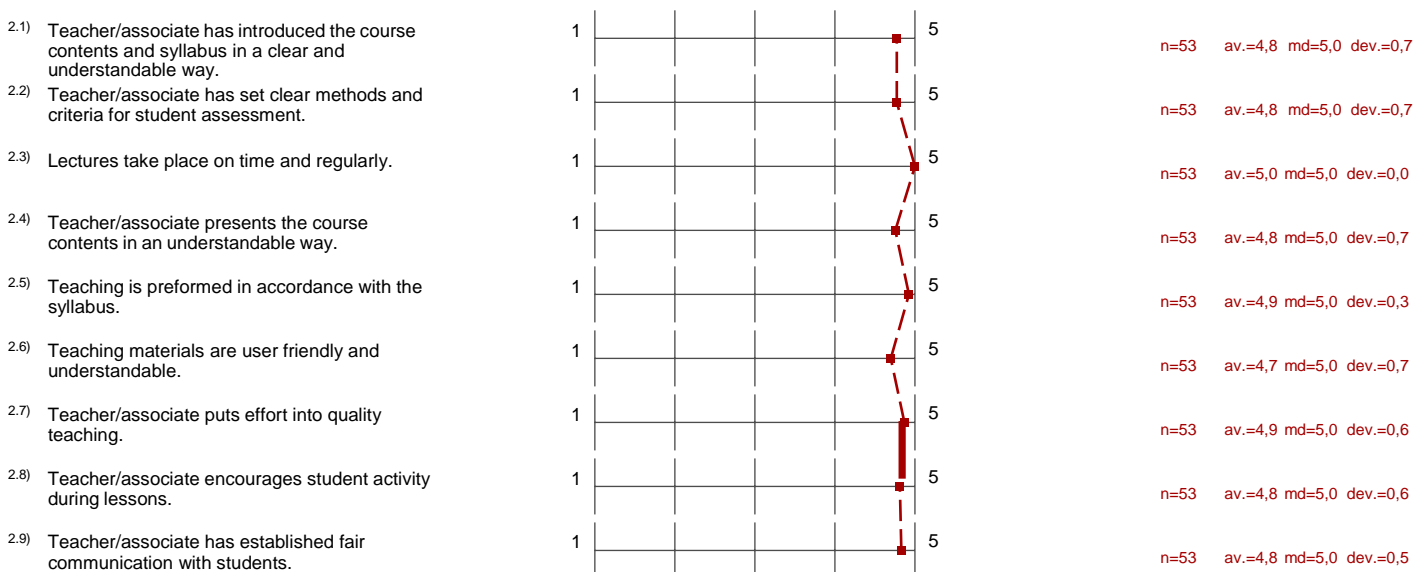
Compilation: Filozofski fakultet, zbirni izvještaj, 2. semestar 2021-2022-engleski

Values used in the profile line: Mean

## 1. Questions about student



## 2. Questions on lectures and teaching quality



Comments Report

3. Please write down your comments and suggestions regarding the work of teacher/associate:

3.1)